




Mariana
Real Estate

**3 Rosler Building, Ewer Street, London Bridge
London, SE1 0FT
£600 Per Week**

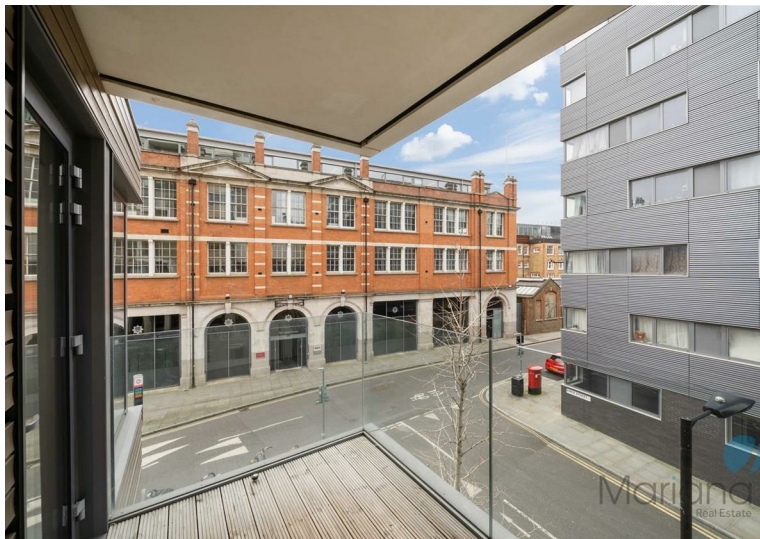
A modern corner aspect one bedroom apartment, situated on the second floor of this stylish development and located within the heart of the London Bridge quarter.

This light and airy apartment has a bright and spacious open plan kitchen with Siemens appliances, clean white corian work surfaces, wine cooler, reception room with floor to ceiling windows, tiled floor, & private west facing balcony. The apartment further benefits from underfloor heating throughout, modern bathroom with heated wall, and daytime concierge service.

Brilliantly located just minutes from the Thames, residents of this fabulous Mount Anvil scheme will be spoilt for choice with the vast array of trendy bars and cool restaurants nearby.

The building is also well appointing for travel, whether it be commuting into the office, going out in London's West-End, or taking a flight away for a long weekend, residents will enjoy close ease of proximity to Southwark and London Bridge Underground stations and London Bridge Railway station, Rosler Building is superbly located with excellent transport links. The building has been meticulously finished with especial detail given to materials and design.

Please note, that some furniture will differ from the photos.



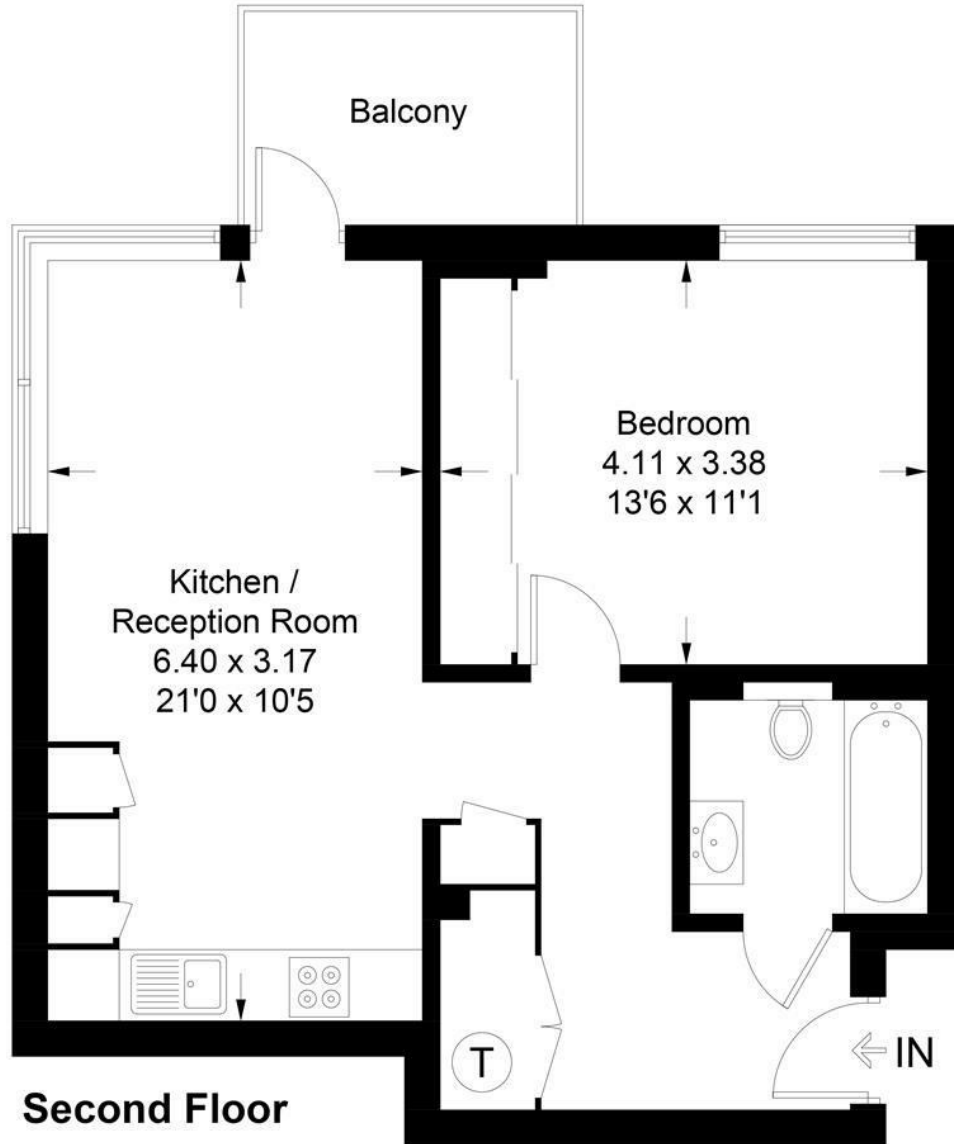
Living/Dining	21'11" x 13'1" (6.7 x 4)
Hall	10'5" x 4'7" (3.2 x 1.4)
Bedroom	13'1" x 9'2" (4 x 2.8)





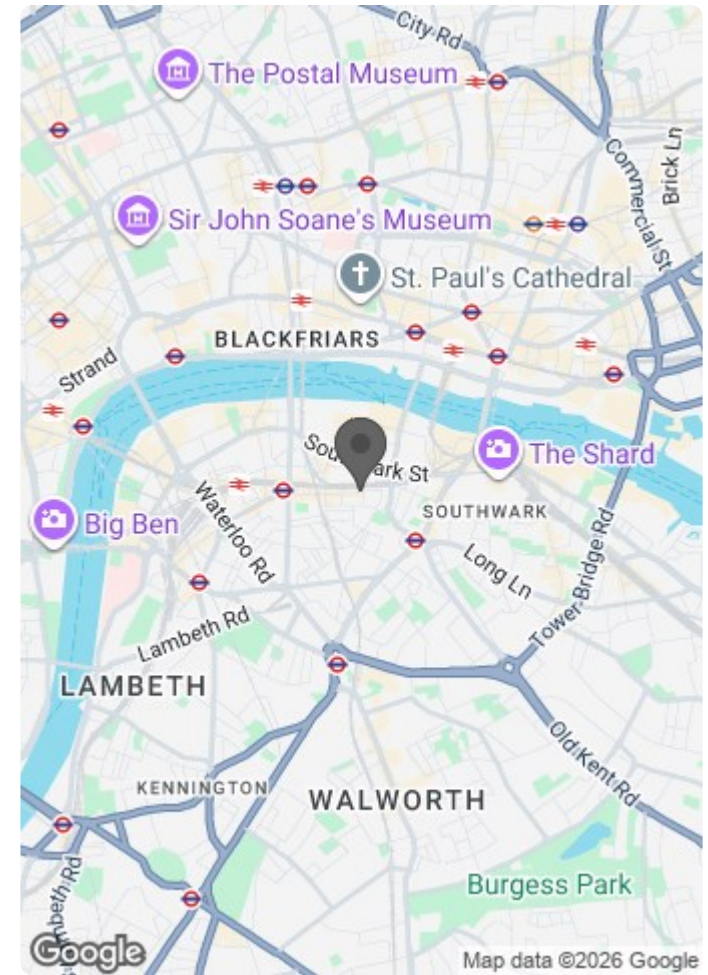
Rosler Building, SE1

Approximate Gross Internal Area = 49.6 sq m / 534 sq ft



Second Floor

Illustration for identification purposes only, measurements are approximate, not to scale. (ID 741625)



Energy Efficiency Rating		Current	Potential
Very energy efficient - lower running costs			
(92 plus) A			
(81-91) B		82	82
(69-80) C			
(55-68) D			
(39-54) E			
(21-38) F			
(1-20) G			
Not energy efficient - higher running costs			
England & Wales		EU Directive 2002/91/EC	

Environmental Impact (CO ₂) Rating		Current	Potential
Very environmentally friendly - lower CO ₂ emissions			
(92 plus) A			
(81-91) B		91	92
(69-80) C			
(55-68) D			
(39-54) E			
(21-38) F			
(1-20) G			
Not environmentally friendly - higher CO ₂ emissions			
England & Wales		EU Directive 2002/91/EC	